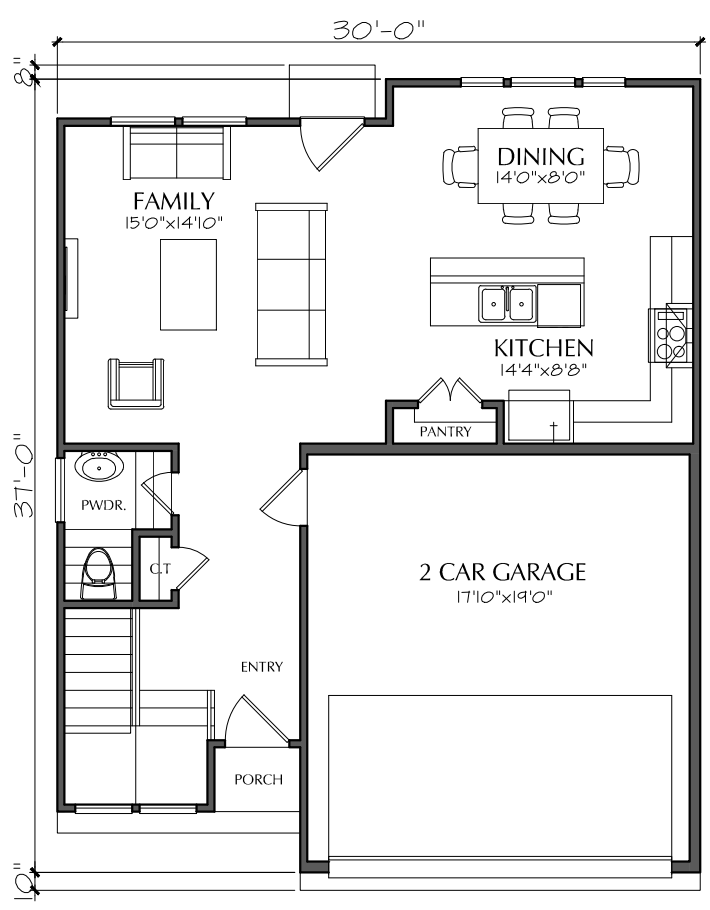
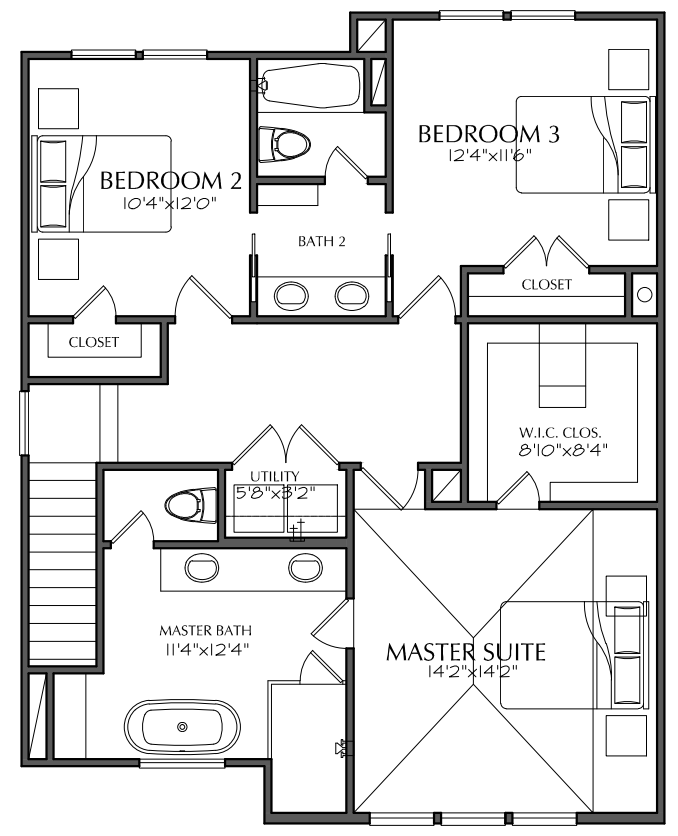




JOB#: F1229 F1.1
LEVEL ONE: 678
LEVEL TWO: 1027
TOTAL LIVING: 1705
TOTAL COVERED: 2076
WIDTH: 30'-0"
DEPTH: 37'-0"
OVERALL DEPTH: 38'-6"
HEIGHT: 33'-7 1/2"
1st FLOOR CLG.: 10'-1"U.O.N.
2nd FLOOR CLG.: 9'-1"U.O.N.



FIRST FLOOR



SECOND FLOOR