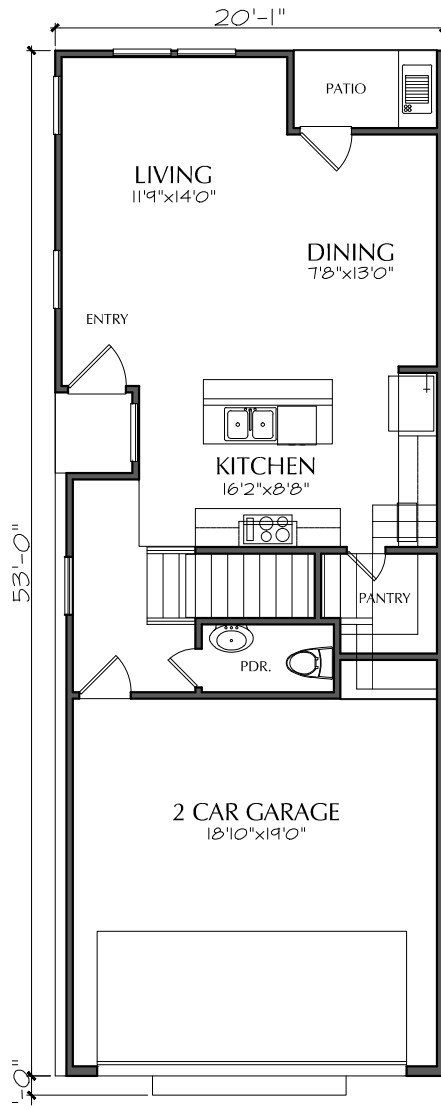
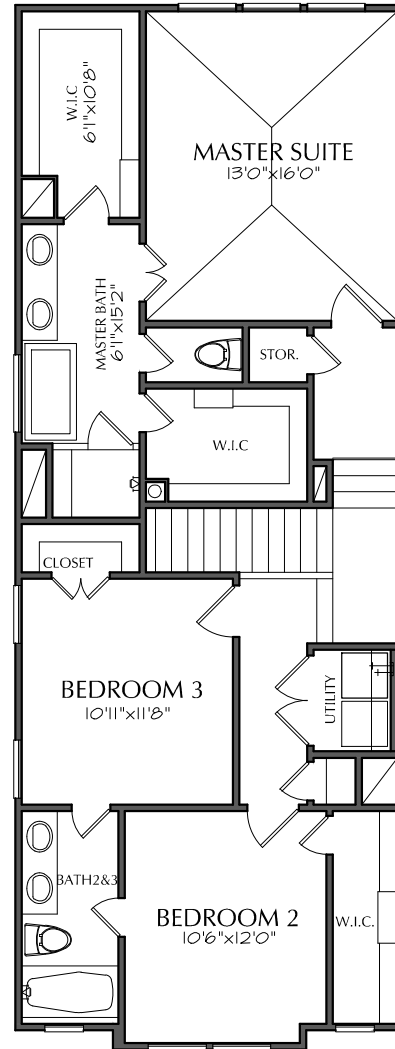


JOB#: F1229 E1.1
LEVEL ONE: 609
LEVEL TWO: 1005
TOTAL LIVING: 1614
TOTAL COVERED: 2035
WIDTH: 20'-1"
DEPTH: 53'-0"
OVERALL DEPTH: 54'-0"
HEIGHT: 31'-6"
1st FLOOR CLG.: 10'-1"U.O.N.
2nd FLOOR CLG.: 9'-1"U.O.N.



FIRST FLOOR



SECOND FLOOR