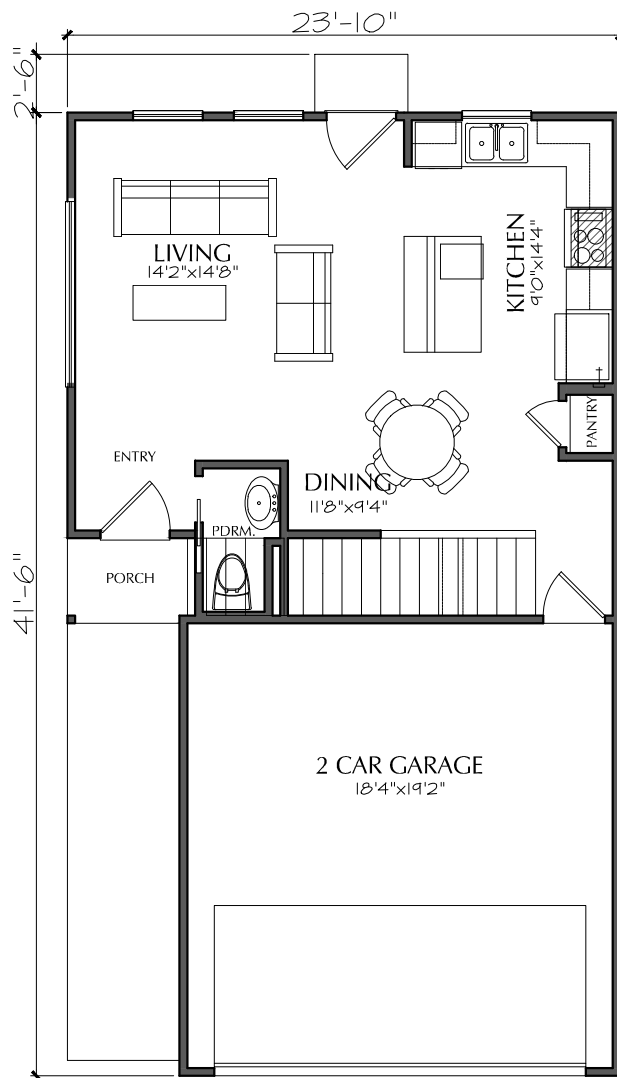
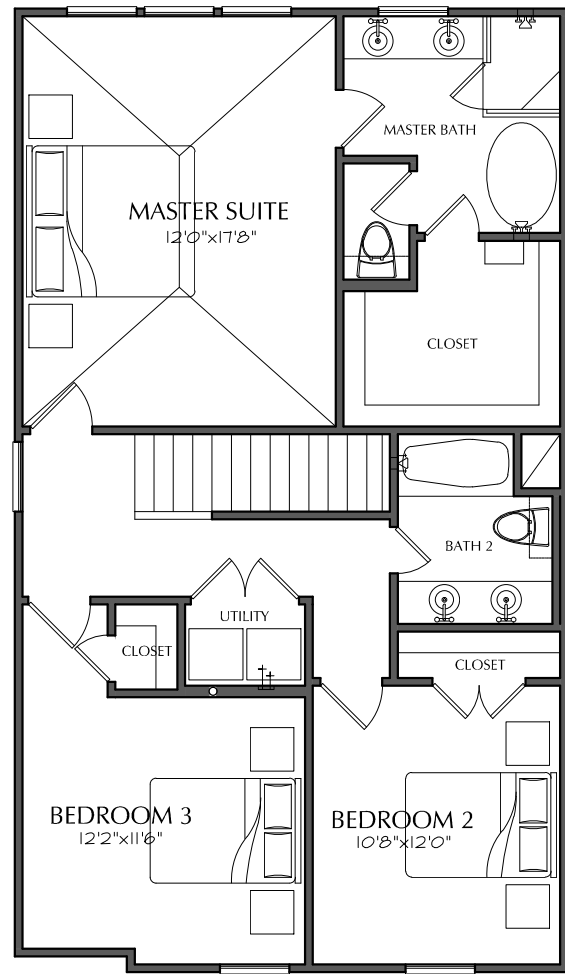


**JOB#:** F1229 D1.1  
**LEVEL ONE:** 504  
**LEVEL TWO:** 949  
**TOTAL LIVING:** 1453  
**TOTAL COVERED:** 1844  
**WIDTH:** 23'-10"  
**DEPTH:** 41'-6"  
**OVERALL DEPTH:** 44'-0"  
**HEIGHT:** 32'-5 1/8"  
**1st FLOOR CLG.:** 10'-1"U.O.N.  
**2nd FLOOR CLG.:** 9'-1"U.O.N.



FIRST FLOOR



SECOND FLOOR