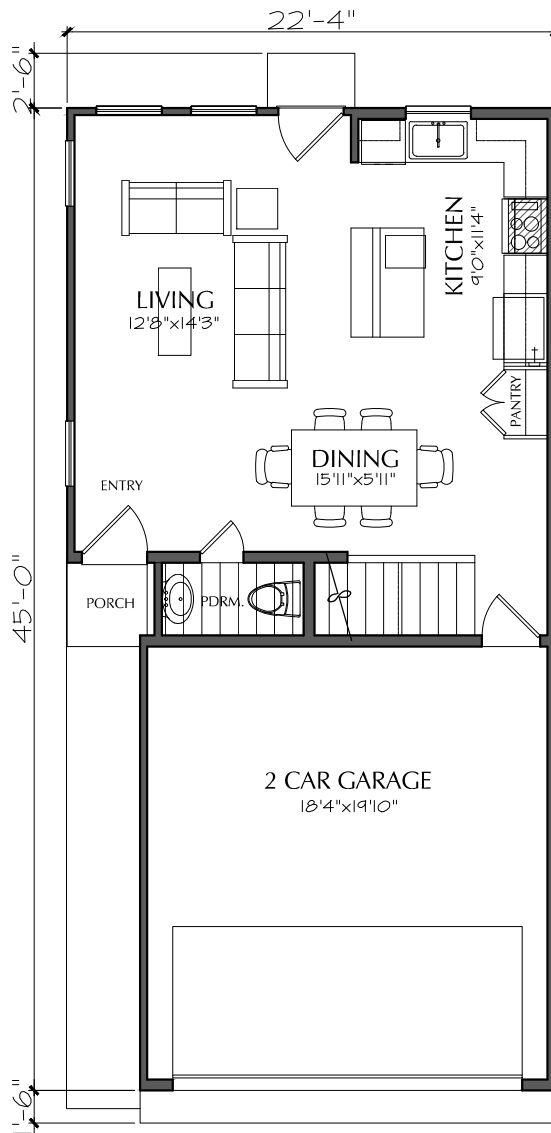
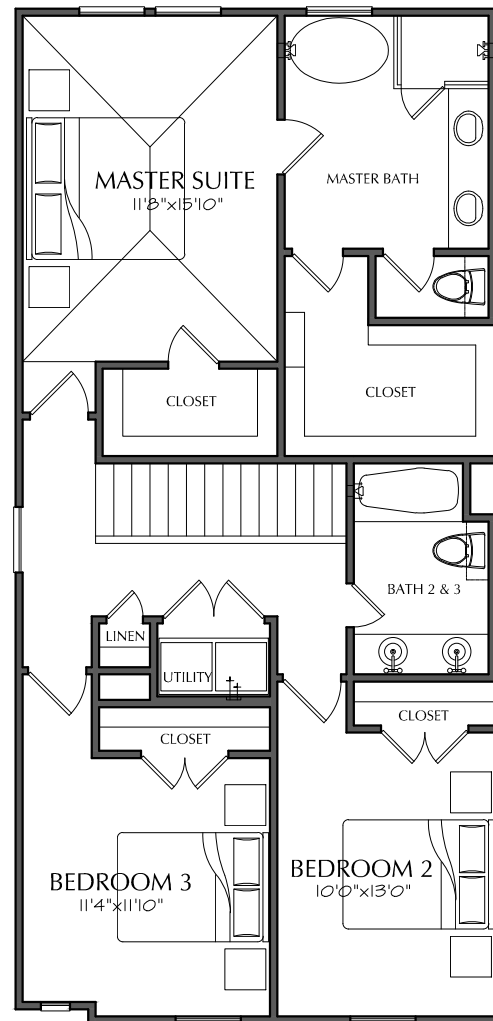


JOB#: F1229 B1.1
LEVEL ONE: 536
LEVEL TWO: 998
TOTAL LIVING: 1534
TOTAL COVERED: 1936
WIDTH: 22'-4"
DEPTH: 45'-0"
OVERALL DEPTH: 49'-0"
HEIGHT: 31'-5 1/8"
1st FLOOR CLG.: 10'-1"U.O.N.
2nd FLOOR CLG.: 9'-1"U.O.N.



FIRST FLOOR



SECOND FLOOR